

ORDER FORM

POLYMAC VARIABLE LENGTH



PUSHING THE ENVELOPE

CUSTOMER INFORMATION |

Customer Name : _____	Customer Ref. No. : _____	Tel : _____
Contact : _____	Email : _____	
Customer Address : _____	Project Name : _____	

Polymac panels and Polymac corner panels are available in standard formats as well as custom variable lengths, allowing for precise adaptation to the needs of your project.

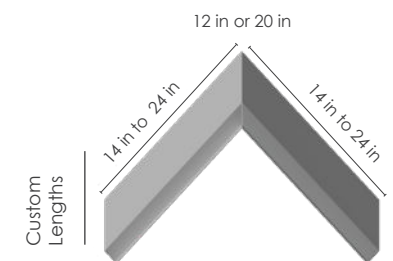
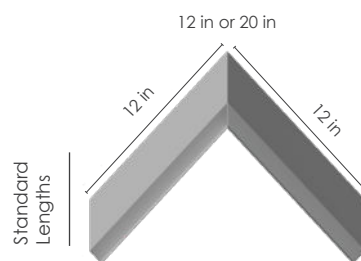
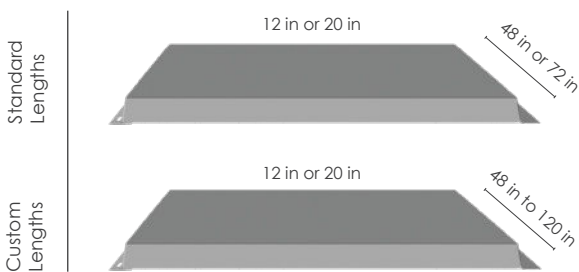
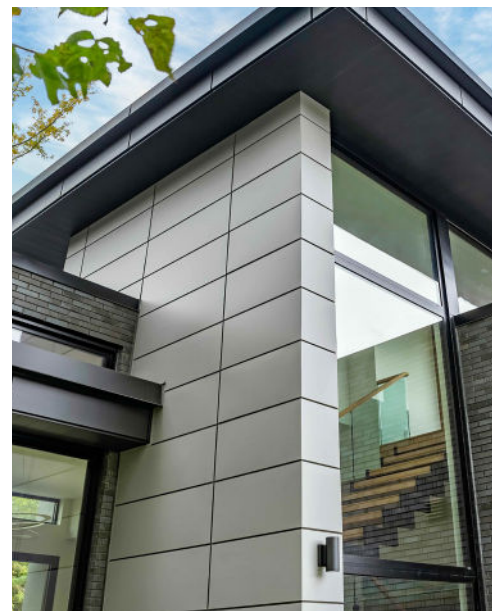
Please note that panel heights remain fixed, at 12 in. or 20 in., depending on the selected model.

POLYMAC PANELS – 12 in. & 20 in. HEIGHT
Variable length: from 48 in. to 120 in.

POLYMAC CORNER PANELS – 12 in. & 20 in. HEIGHT
Variable length on each side: from 14 in. to 24 in.

This form must be used for any order of Polymac panels or Polymac corner panels in variable lengths.

Please confirm all required dimensions and options to ensure order accuracy and a smooth production process.



COULEURS DISPONIBLES |

Collection	Color Code	24g		22g		24g		22g	
Wood Collection	301-Torrefied					302-Cedar			310-White Oak
	304-Smoked Birch					312-Teak			313-Cork
Signature Collection	202-Anthracite					203-Brushed Zinc			204-Smoky Quartz
	205-Copper Bronze								
Inspiration Collection	101-Titanium White					102-Titanium Black			103-Metallic Grey
	*** PLEASE NOTE THAT THE BRIGHT RED COLOR IS OFFERED AT THE SIGNATURE COLOR PRICE.								

ORDER FORM

POLYMAC VARIABLE LENGTH



PUSHING THE ENVELOPE

Description	Product Code		Qt	Gauge	Width	Length	Color
	SPPG24.12.VAR	SPPG22.12.VAR					
Polymac Panel 12'' x var. length				24 or 22	12 in		
Polymac Panel 12'' x var. length					12 in		
Polymac Panel 12'' x var. length					12 in		
Polymac Panel 12'' x var. length					12 in		
Polymac Panel 12'' x var. length					12 in		
Polymac Panel 12'' x var. length					12 in		
Polymac Panel 12'' x var. length					12 in		
Polymac Panel 12'' x var. length					12 in		

Description	Product Code		Qt	Gauge	Width	Length	Color
	SPPG24.20.VAR	SPPG22.20.VAR					
Polymac Panel 20'' x var. length				24 or 22	20 in		
Polymac Panel 20'' x var. length					20 in		
Polymac Panel 20'' x var. length					20 in		
Polymac Panel 20'' x var. length					20 in		
Polymac Panel 20'' x var. length					20 in		
Polymac Panel 20'' x var. length					20 in		
Polymac Panel 20'' x var. length					20 in		
Polymac Panel 20'' x var. length					20 in		

PANEL DIMENSIONS OF VARIABLE LENGTHS |

Polymac Panel 12'' x var. length, 22 g	SPPG22.12.VAR
Polymac Panel 12'' x var. length, 24 g	SPPG24.12.VAR
Width 12 in (304.8 mm)	
Length 48 in (1219.2 mm) to 120 in (3048 mm)	
Depth 1 in (25.4 mm)	

Polymac Panel 20'' x var. length, 22 g	SPPG22.20.VAR
Polymac Panel 20'' x var. length, 24 g	SPPG24.20.VAR
Width 20 in (508 mm)	
Length 48 in (1219.2 mm) to 120 in (3048 mm)	
Depth 1 in (25.4 mm)	

FOR INFORMATION PURPOSES ONLY

STANDARD PANEL DIMENSIONS |

Polymac Panel 12'' x 48'', 22 g	SPPG22.12X48
Polymac Panel 12'' x 72'', 22 g	SPPG22.12X72
Polymac Panel 12'' x 48'', 24 g	SPPG24.12X48
Polymac Panel 12'' x 72'', 24 g	SPPG24.12X72
Width 12 in (304.8 mm)	
Length 48 in (1219.2 mm) or 72 in (1828.8 mm)	
Depth 1 in (25.4 mm)	
Box of 8 corner panels (12 x 48 in), 32 ft ² (3 m ²)	
Box of 8 corner panels (12 x 72 in), 48 ft ² (4.46 m ²)	

Polymac Panel 20'' x 48'', 22 g	SPPG22.20X48
Polymac Panel 20'' x 72'', 22 g	SPPG22.20X72
Polymac Panel 20'' x 48'', 24 g	SPPG24.20X48
Polymac Panel 20'' x 72'', 24 g	SPPG24.20X72
Width 20 in (508 mm)	
Length 48 in (1219.2 mm) or 72 in (1828.8 mm)	
Depth 1 in (25.4 mm)	
Box of 8 corner panels (20 x 48 in), 53.33 ft ² (4.96 m ²)	
Box of 8 corner panels (20 x 72 in), 80 ft ² (7.44 m ²)	

ORDER FORM

POLYMAC VARIABLE LENGTH



PUSHING THE ENVELOPE

Description	Product Code		Qt	Gauge	Width	Side Lengths		Color
	SPCG24.12.VAR	SPCG22.12.VAR				Left	Rigth	
Polymac Corner 12'' x var. length					12 in			
Polymac Corner 12'' x var. length					12 in			
Polymac Corner 12'' x var. length					12 in			
Polymac Corner 12'' x var. length					12 in			
Polymac Corner 12'' x var. length					12 in			
Polymac Corner 12'' x var. length					12 in			
Polymac Corner 12'' x var. length					12 in			
Polymac Corner 12'' x var. length					12 in			

Description	Product Code		Qt	Gauge	Width	Side Lengths		Color
	SPCG24.20.VAR	SPCG22.20.VAR				Left	Rigth	
Polymac Corner 20'' x var. length					20 in			
Polymac Corner 20'' x var. length					20 in			
Polymac Corner 20'' x var. length					20 in			
Polymac Corner 20'' x var. length					20 in			
Polymac Corner 20'' x var. length					20 in			
Polymac Corner 20'' x var. length					20 in			
Polymac Corner 20'' x var. length					20 in			
Polymac Corner 20'' x var. length					20 in			

DIMENSIONS CORNER PANELS VARIABLE LENGTH |

Polymac Corner 12" x var. length, 22 g	SPCG22.12.VAR
Polymac Corner 12" x var. length, 24 g	SPCG24.12.VAR
Width 12 in (304.8 mm)	
Length 14 in to 24 in (355.6 to 609.6 mm) on each sides	
Depth 1 in (25.4 mm)	

Polymac Corner 20" x var. length, 22 g	SPCG22.20.VAR
Polymac Corner 20" x var. length, 24 g	SPCG24.20.VAR
Width 20 in (508 mm)	
Length 14 in to 24 in (355.6 to 609.6 mm) on each sides	
Depth 1 in (25.4 mm)	

FOR INFORMATION PURPOSES ONLY

STANDARD DIMENSIONS CORNER PANELS |

Polymac Corner 12" x 12" x 12", 22 g	SPCG22.12
Polymac Corner 12" x 12" x 20", 22 g	SPCG22.20
Polymac Corner 12" x 12" x 12", 24 g	SPCG24.12
Polymac Corner 12" x 12" x 20", 24 g	SPCG24.20
Box of 4 corner panels	
Width 12 in (304.8 mm) on each sides	
Length 12 in (304.8 mm) or 20 in (508 mm)	
Depth 1 in (25.4 mm)	