

MS 750 & MS 750I

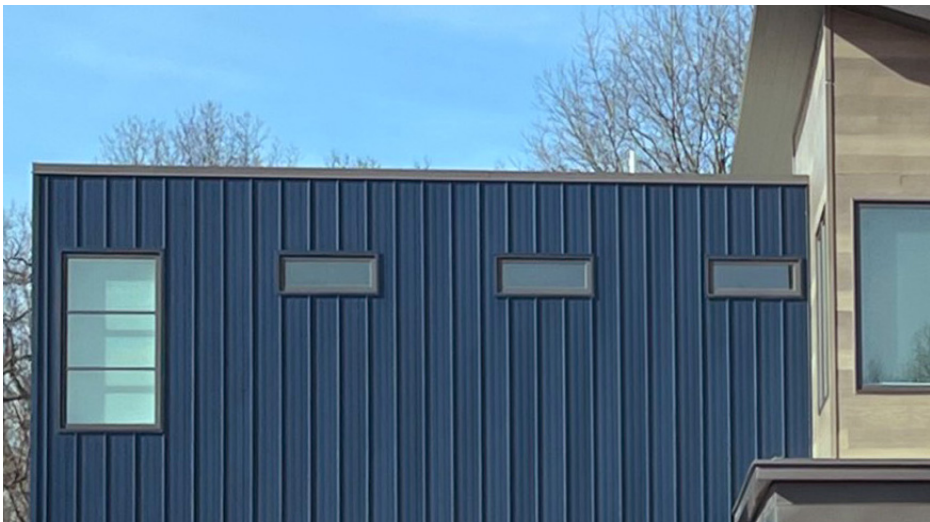
Data Sheet



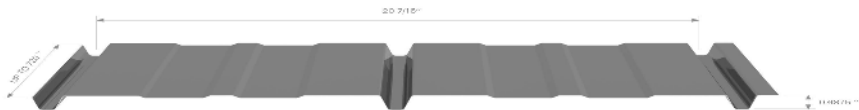
Prefinished Steel Wall Profile With Visible Screws



MS 750



MS 750 I



DESCRIPTION

Profile designed for wall installation and vertical, horizontal, or diagonal installation. Economical and sturdy, these profiles will be your best allies if you are looking for a way to elegantly covering your exterior and interior walls and ceilings. Quick to install, choosing these means choosing a hassle-free and, above all, maintenance-free solution!

WARRANTY

Since we use a superior grade of steel and an unparalleled painting process that ensures longevity, MAC offers its customers a 40-year Quiet Guarantee.



INSTALLATION WARRANTY

In the event that a problem occurs during the installation of the profiles, it is important to report the situation immediately to your supplier before proceeding with the rest of the installation. For MS 750 and MS 750I profiles, the supplier must be notified prior to the installation of 500 sq. ft. Beyond 500 sq. ft. the installer is responsible for the installation.

PRODUCT SPECIFICATIONS

Dimensions	
Standard length	3 to 60 ft (0,914 m to 18.29 m)
Height (covered)	20,5 in (520.7 mm)
Thickness (width)	11/16 in (17.45 mm)
Weight (per panel)	26 g 1.06 lb/ft² (0.48 kg/ft²) 24 g 1.32 lb/ft² (0.6 kg/ft²)
Screw holes (openings)	Non-perforated
Available gauge Galvanized Z275 (G90) 33SS (230) grade steel as per ASTM A653/A653M	
Gauge	26 g 24 g
Packaging details	
Single package size	33 in x 17 (max) x custom length 50 panels
Installation direction	
Installation orientation	horizontal vertical diagonal

MS 750 & MS 750I

Data Sheet



Prefinished Steel Wall Profile With Visible Screws

TESTS

FIRE RESISTANCE

- Tested to ASTM-E2768 for use in non-combustible construction in Wildland Urban Interfaces in California (required for WUI listing).
- Tested as per CAN/ULC-S135 for use in non-combustible constructions.
- Tested as per ASTM E84 for non-combustible construction (Class A category).
- Classified 0 Flammability Hazard, according to the NFPA Rating Explanation Guide.

TYPE OF TEST	DESCRIPTION	STATUS
CAN/ULC-S135	Fire resistance (CAN)	Compliant
ASTM E84	Fire resistance (USA)	Class A
W.U.I.	Wildland Urban Interface accreditation	Inscription 8140-2358-0500
ASTM D5206-06A	Maximum sustained pressure	Non-tested
ASTM E330	Plank deflection under wind pressure (Tested for these variables, the results are available upon request)	Non-tested
ASTM E283	Air leakage of the wall assembly	Non-tested
FBC	Florida Building Code accreditation	Non-tested
TDI	Texas Department of Insurance accreditation	Non-tested
Miami Dade, ASTM E1886, E1996, TAS 202 & TAS 203	ZHLA.63 Hurricane Resistance accreditation	Non-tested

TEXTURAL III & IV PAINT SYSTEM

We apply TEXTURAL paint technology to all of our products to ensure their superior quality. Each of the colors from the wide range we offer create unparalleled depths of hue and texture, perfectly reproducing noble materials such as oxidized copper, zinc, and wood, while eliminating unwanted glare from the sun through clean matte surface finishes.

PRINCIPAL CHARACTERISTICS

- Visible screws
- Linear and uncluttered appearance
- No joints along the length of the panels
- Lengths from 3 to 60 feet
- Economical system
- Easy to install
- Non-combustible product
- Maintenance-free product
- 24- or 26-gauge

ENVIRONMENT | SPECIFIC EDP, HPD AND EDS

Placing the environment at the heart of our priorities, all of our products are made from 86% recycled material and are 100% recyclable at the end of their life.

We are committed to offering sustainable, long-lasting products made exclusively from premium North American steel. Our materials are designed to support responsible building practices and can contribute to the achievement of LEED certification. To learn more, we invite you to consult our Environmental Product Declarations (EPD) and Health Product Declarations (HPD) available on our Environmental page.



CAGBC | Canada Green Building Council



INSTALLATION SURFACES

- On wood furring (1 x 3 in)
- On metal furring (Z bars) (18-gauge or 20-gauge)

Note: All furring must be ground horizontally and vertically to allow installation according to accepted practices and to obtain a good installation result.

ASSEMBLY

- Comply with the manufacturer's requirements, recommendations, and written specifications, including any available technical bulletins such as the installation guide, installation videos available on the manufacturer's web page, and instructions in the web page and instructions appearing in the product catalog.

FIXATION

- Drip flashing must be installed behind the furring and the weather barrier for the MS 750 & MS 750 I profiles. It must be carefully levelled, as it will determine the straightness of the work.
- Before starting the installation, refer to the videos and installation guides to make sure you have all the tools and accessories you need to start the installation.
- A methodical verification of the work must be done every 3 or 4 sheets in order to detect to detect possible anomalies.
- Continuous installation of drip moldings, starter moldings, inset/outset corner pieces, corner pieces, borders, soffits, moldings adjacent to doors and windows according to the manufacturer's recommendations.
- Set a screw every 16 or 24 inches (406 or 609.6 mm) in the center of the holes (openings) provided for this purpose.
- Furring should be at intervals of 16 in (406 mm) to 24 in (609.6 mm).
- Lay the furring so as to ensure continuous support for straight-level installation of the siding.
- MS 750 / MS 750 I panels are assembled by partial superimposition.
- For MS 750 panels, the first groove of the panel is placed over the last groove of the previously installed panel. The face is in line at the level of the entremises, with sealing washer screws at the top of the overlapping grooves. Screw carefully so as not to deform the embossed parts of the panels where the screws are set.
- For MS 750 I, the first groove of the panel is placed over the last groove of the previously installed panel. The face is in line at the level of the entremises, with sealing washer screws at the very bottom of the superimposed grooves.
- If necessary, caulk joints between adjacent elements and structures with a MAC sealant/one-component neutral adhesive that vulcanizes into a durable, elastic rubber silicone in contact with ambient moisture.
- Installation of the MAC siding products on ZIP R-sheathing panels and other dual composite panels with a softer material than wood is not recommended. This type of panel doesn't offer a good rigid mounting surface for the MAC products and will allow for movement and deformation under varying weather and sun exposure transferring into oil canning.

FASTENING

MAC is proud to offer you a screw system adapted to its profiles. The screws used to screw our products must meet the STM B-117 2000h standard. The use of MAC screws designed for our profiles is strongly recommended.

Use the MAC Color Screw (2 in) on the surface that needs to be fastened.

The screws should be set with moderate contact on the clip part of the panel to avoid impeding the expansion of the metal. The screws must not exert any upward or downward pressure to avoid deforming the siding or opening the panels at the joints. Remove the protective film from the siding prior to installation to facilitate a good visual inspection of the quality of the installation and in order to make appropriate corrections as installation progresses.



A056.250
Color Screw
2 in

ACCESSORIES & MOLDINGS

With an eye for detail, MAC offers a series of accessories compatible with its profiles to ensure a perfect finish. Discover our moldings, arches, soffits, vents, screws, and snow gates offered in our unique color series.

All standard moldings such as transition trim, inside/outside corners, and drip moldings are available from the MAC manufacturer or distributors in 10 ft (3048 mm) lengths. Please refer to the website for the complete molding and flashing guide. Custom moldings are available in 10 ft (3048 mm) lengths upon request. They can be manufactured by MAC or by a forming company from flat rolls supplied by MAC.

RESOURCES

To help you in the realization of your project, we have made all of the CAD, REVIT, and DWG drawings, as well as the videos and technical guides of our profiles, available for you to use on website. Find these resources in the PRO Space of each.

