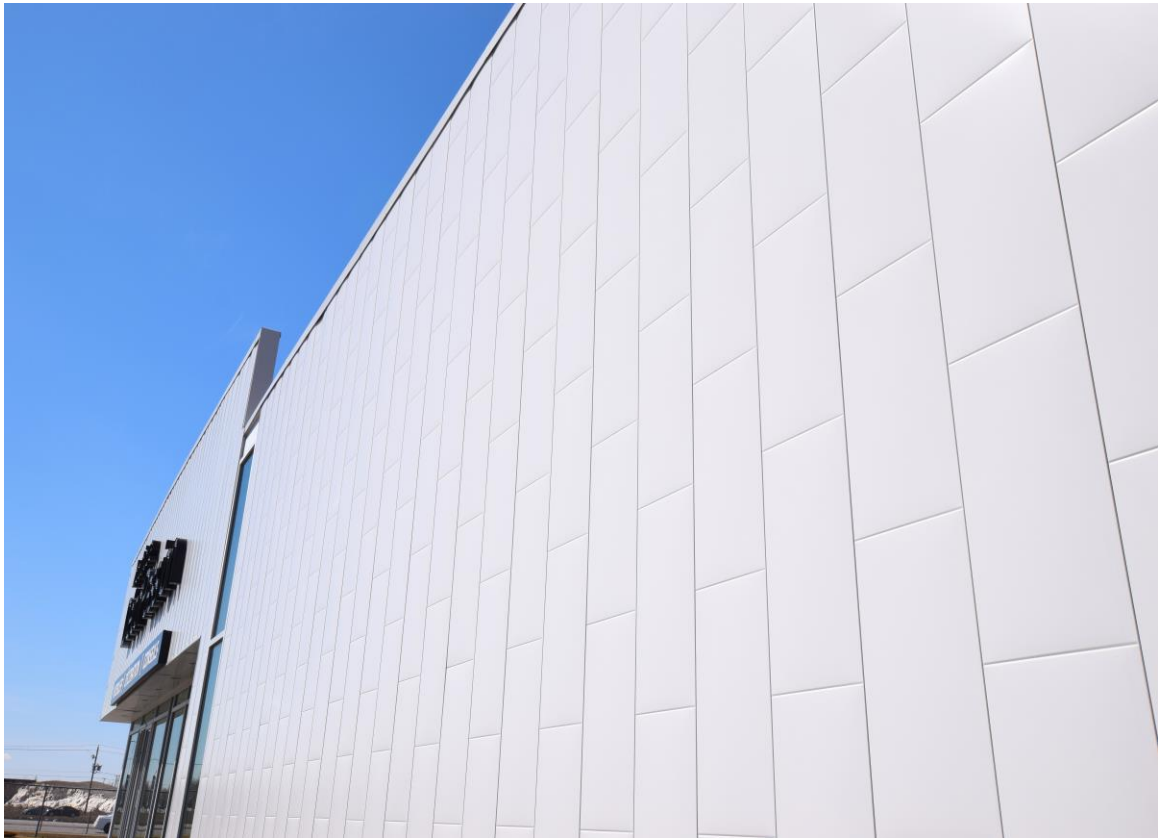


MAC

MÉTAL ARCHITECTURAL

Technical Sheet **Metal Block Siding**

METAL BLOCK WALL SIDING WITH NO VISIBLE SCREWS



Description

METAL BLOCK siding is an exclusive MAC Metal Architectural product. It is the result of an R&D project that was developed over a span of several years. The panels are designed with no visible screws, using a process called roll forming. The result is a single large panel, instead several smaller ones stapled together. This unique siding provides a uniform, original covering for both commercial and industrial projects and residential walls

Technical Sheet **Metal Block Siding**

METAL BLOCK WALL SIDING WITH NO VISIBLE SCREWS

- Customized sections according to blueprints and pricing (up to 52 lin. ft.)
- Panel height – 12 in.
- Length (panel thickness) – 1 in.
- Vertical dummy joints (horizontal grooves on panel surface) in repeated sequence to simulate metal blocks
- Standard production – dummy joint sequences every 24 in., giving the optic illusion of 12 X 24 in. blocks
- Non-standard production – client selects the length of sequences.
- Possibility to align dummy joints according to panel rows installed (Ceramic or stairs effect)
- Possibility to offset dummy joints according to panel rows installed (masonry effect)
- Quick, easy installation thanks to hidden joints (screws)
- Vertical, horizontal or diagonal installation
- Installation on wooden or metal furring (Z or Omega bars) 18 or 20 cal.
- Available in 26 and 24 gauge depending on choice of colour
- Available in all TEXTURAL III series colours (polyurethanes-based) and several PESPECTRA series colours

Total Allowed Weight for Triple (or+) Support in Lbs./sq. ft. (12'' width,												
Internal Gravity Load							External Gravity Load					
(Tension)							(Jib)					
GA	2	2.5	3	3.5	4	5	2	2.5	3	3.5	4	5
26	130	83	57	42	32	20	130	83	57	42	32	20
24	198	126	87	65	49	31	198	126	87	65	49	31
External Lifting Load							External Lifting Load					
(Tension)							(Jib)					
GA	2	2.5	3	3.5	4	5	2	2.5	3	3.5	4	5
26	234	150	104	77	59	37	234	150	104	68	45	23
24	354	227	158	116	89	57	227	156	98	66	46	34

Technical Sheet **Metal Block Siding**

METAL BLOCK WALL SIDING WITH NO VISIBLE SCREWS

Technical Properties for the TEXTURAL III Paint System

Nominal thickness of paint in microns 1	35
Paint system	Structural
Lustre, 600 Gardner pencil 2	40
Maximum operation temperature 0C	100
Minimum operation temperature 0C	-60
Maximum formation temperature 0C 3	-15
Formability radius allowed 4	1t
Corrosion resistance – Flaking test 5	1000h
Test – Salt Chamber 6	1000h

- 1) Paint thickness tolerance according to EN 10169-1 standard
- 2) Paint lustre tolerance according to EN 10169-1 standard
- 3) Indicates the maximum temperature at which the material can form.
Depends on the method and speed of formation.
- 4) t = thickness of the metal sheet without paint. The maximum radius allowed to bend metal without the appearance of visible cracks, according to sheet thickness.
- 5) According to ASTM G 85 standard
- 6) According to ISO 6270 standard